

STRAL

LOCH B180

LOCH B180 The spacer integrated with the lamp body makes the product compact. Made of AISI 316L stainless steel. Flush black silk-screened glass extra-clear tempered, 4mm thick. Available in single and bi-emission versions in three distinct diameters for different design needs. 21°, 45° and 65° optics with colour temperatures of 2700K, 3000K and 4000K. Integrated power supply. HCT surface finish available in three variants.

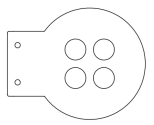


LOCH B180



223

120



223

180

Color

2700 K
2 x 2174lm

3000 K
2 x 2200 lm

4000 K
2 x 2453 lm

Emission

21° + 21°

45° + 45°

65° + 65°

Power
2 x 18 W

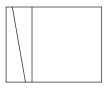


Codes
Technical details

IP66

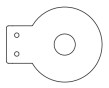
IK08

LOCH B120



154

120



154

120

Color

2700 K
2 x 741lm

3000 K
2 x 750 lm

4000 K
2 x 836 lm

Emission

21° + 21°

45° + 45°

65° + 65°

Power
2 x 7 W



Codes
Technical details

IP66

IK08

LOCH B90



120

120



120

90

Color

2700 K
2 x 543 lm

3000 K
2 x 550 lm

4000 K
2 x 613lm

Emission

21° + 21°

45° + 45°

65° + 65°

Power
2 x 5 W



Codes
Technical details

IP66

IK08



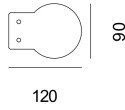
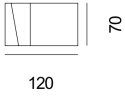
F W Lighting - The Light House - 37 Wadham Grove - Emersons Green - Bristol - BS16 7DX

+44 (0) 7891 919 169

info@fw-lighting.com

www.fw-lighting.com

LOCH M90



Color

2700 K
543 lm

3000 K
550 lm

4000 K
613 lm

Emission

21°

45°

65°

Power
5 W

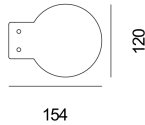
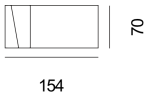


Codes
Technical details

IP66

IK08

LOCH M120



Color

2700 K
741 lm

3000 K
750 lm

4000 K
836 lm

Emission

21°

45°

65°

Power
7 W

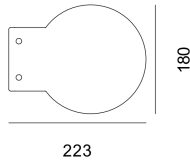
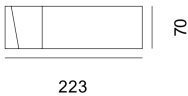


Codes
Technical details

IP66

IK08

LOCH M180



Color

2700 K
2174 lm

3000 K
2200 lm

4000 K
2453 lm

Emission

21°

45°

65°

Power
18 W



Codes
Technical details

IP66

IK08



F W Lighting - The Light House - 37 Wadham Grove - Emersons Green - Bristol - BS16 7DX

+44 (0) 7891 919 169

info@fw-lighting.com

www.fw-lighting.com