



# stik



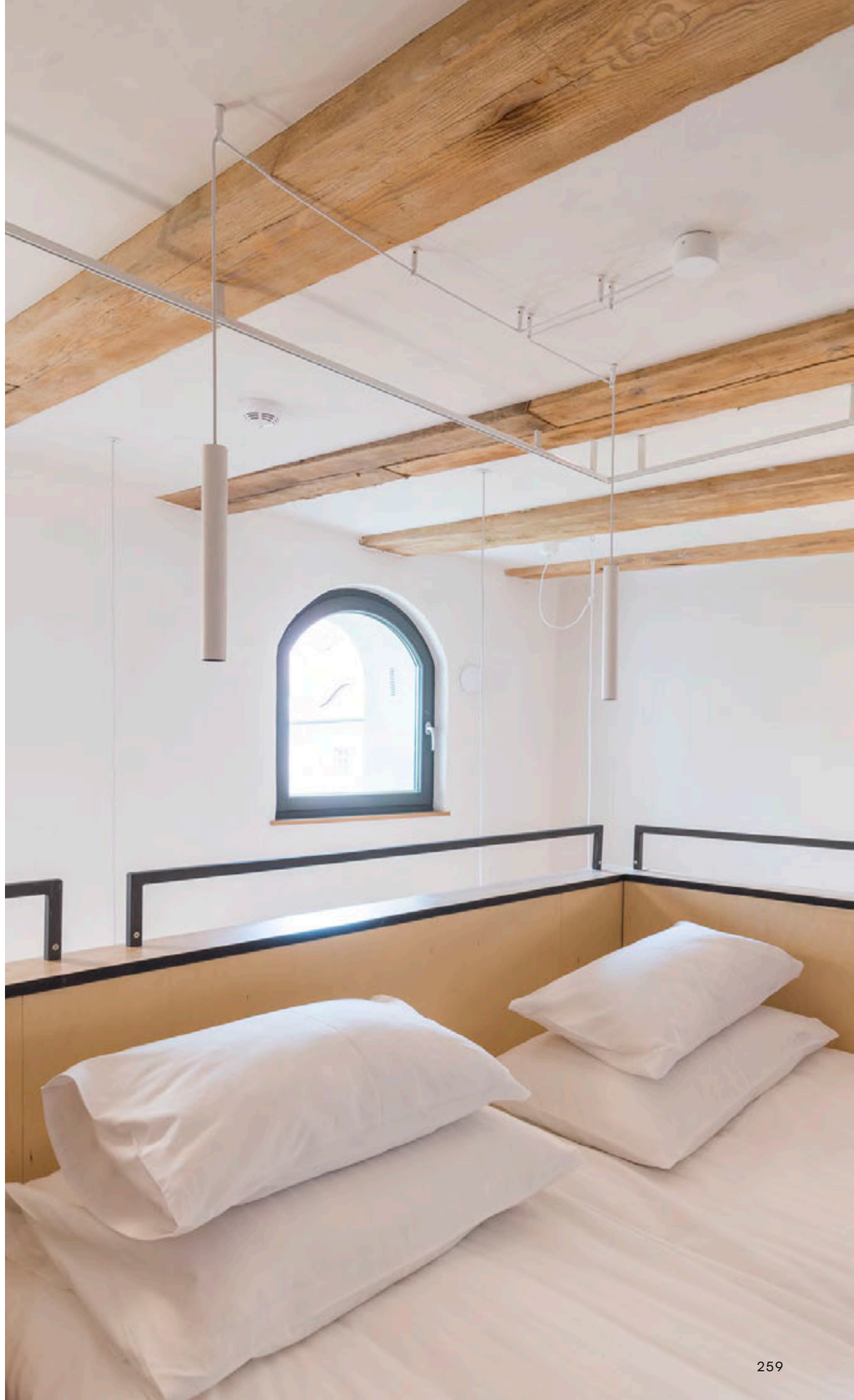
new  
model

Stik is a family of luminaires based on small diameter, round bodies. The Stik range, so far consisting of Stik 25 and 35 luminaires, has been extended to include Stik 16 model characterised by a diameter of just 16mm. Minimalist in their form and compact luminaires include many different models: surface-mounted spotlights and those mounted on 1F and 3F rails as well as recessed and pendant luminaires; the family is complemented by a group of wall lamps which are perfectly suitable for bedrooms, some with a mini switch on their housing.

Stik pendant offers a wide range of body lengths from 200 up to 1000mm, allowing you to create very diverse compositions of lengths and diameters to build a desirable atmosphere in a dining room or a restaurant. Stik Pure 35 is a simplified, adjustable spotlight without the characteristic “stick”, it is available in 1F or 3F rail compatible version. The glare effect is eliminated by moving the optics deep into the body. Additionally, the optics are surrounded by an invariably black ring



stik 35.200 ZW / 25.500 ZW





ZNAMY SIĘ

fol. Krzysztof Zgola

stik



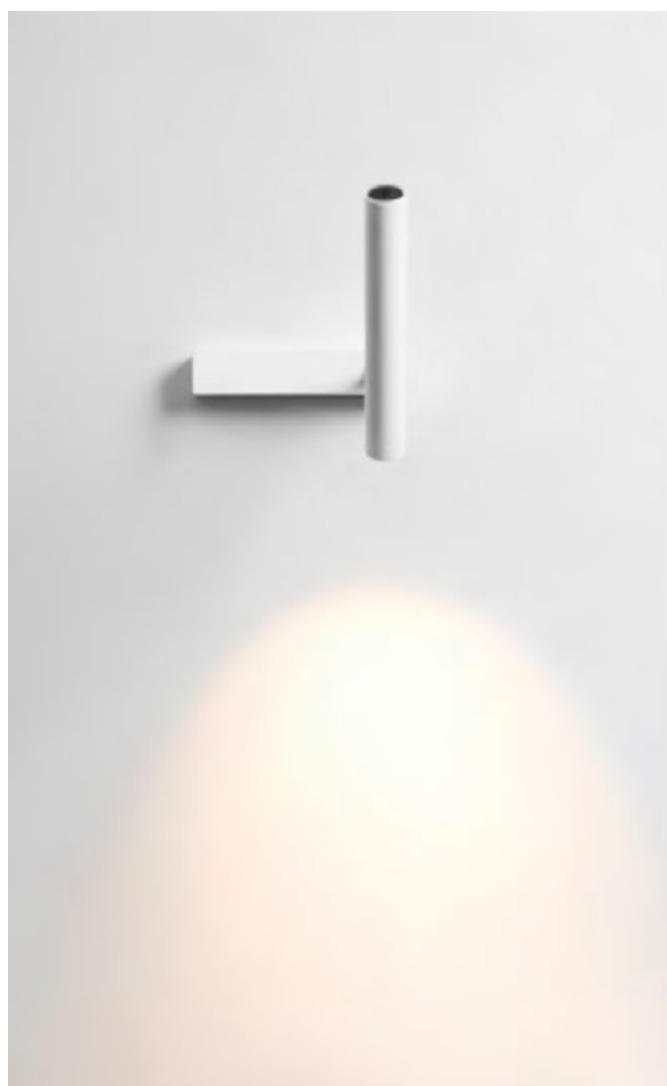
stik 25.1 NT / 35.1 ad 3F



stik pure 35 ad 3F



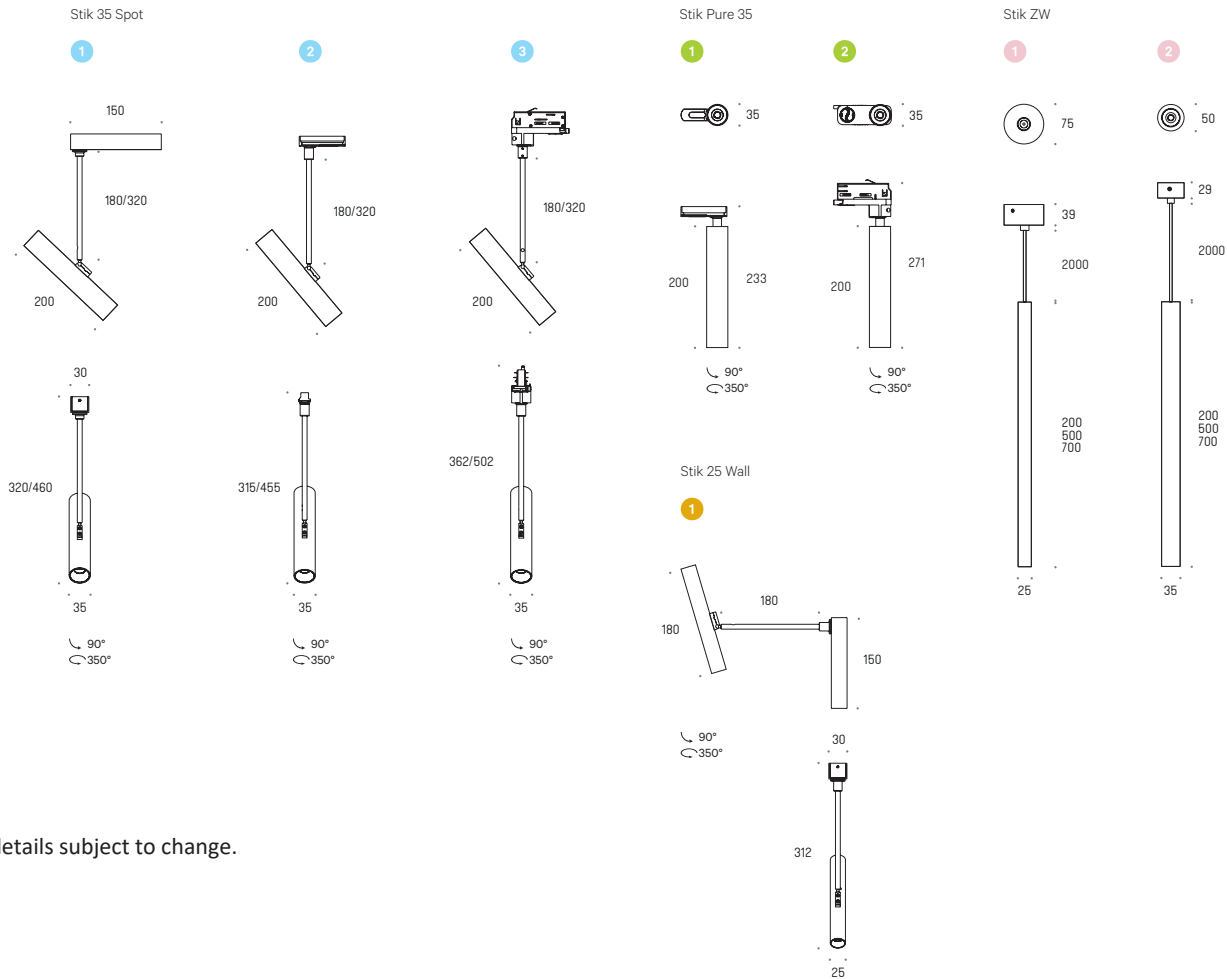
stik 35.1 ad 3F



stik 25.1 wall KN

				.02	.03	.99	.927	.930	.940
<b>Stik 35 Spot</b> ⊕									
1	35.1 NT H180	1x 8.5W 500lm, 44°	2.1271	•	•	•	•	•	•
1	35.1 NT H320	1x 8.5W 500lm, 44°	2.1272	•	•	•	•	•	•
2	35.1 AD 1F H180	1x 8.5W 500lm, 44°	7.1274	•	•	•	•	•	•
2	35.1 AD 1F H320	1x 8.5W 500lm, 44°	7.1275	•	•	•	•	•	•
3	35.1 AD 3F H180	1x 8.5W 500lm, 44°	7.1276	•	•	•	•	•	•
3	35.1 AD 3F H320	1x 8.5W 500lm, 44°	7.1277	•	•	•	•	•	•
<b>Stik Pure</b> ⊕									
1	Pure 35 AD 1F	1x 8.5W 500lm, 44°	7.1908	•	•	•	•	•	•
2	Pure 35 AD 3F	1x 8.5W 500lm, 44°	7.1909	•	•	•	•	•	•
<b>Stik ZW</b> ⊕									
1	25.200mm ZW	1x 4.5W 200lm, 43°	5.1767	•	•	•	•	•	•
1	25.500mm ZW	1x 4.5W 200lm, 43°	5.1763	•	•	•	•	•	•
1	25.700mm ZW	1x 4.5W 200lm, 43°	5.1764	•	•	•	•	•	•
2	35.200mm ZW	1x 11W 700lm, 44°	5.1768	•	•	•	•	•	•
2	35.500mm ZW	1x 11W 700lm, 44°	5.1765	•	•	•	•	•	•
2	35.700mm ZW	1x 11W 700lm, 44°	5.1766	•	•	•	•	•	•
<b>Stik KN (wall)</b> ⊕									
1	25.1 Wall KN H180	1x 4.5W 200lm, 43°	1.1267	•	•	•	•	•	•

• CR190



details subject to change.